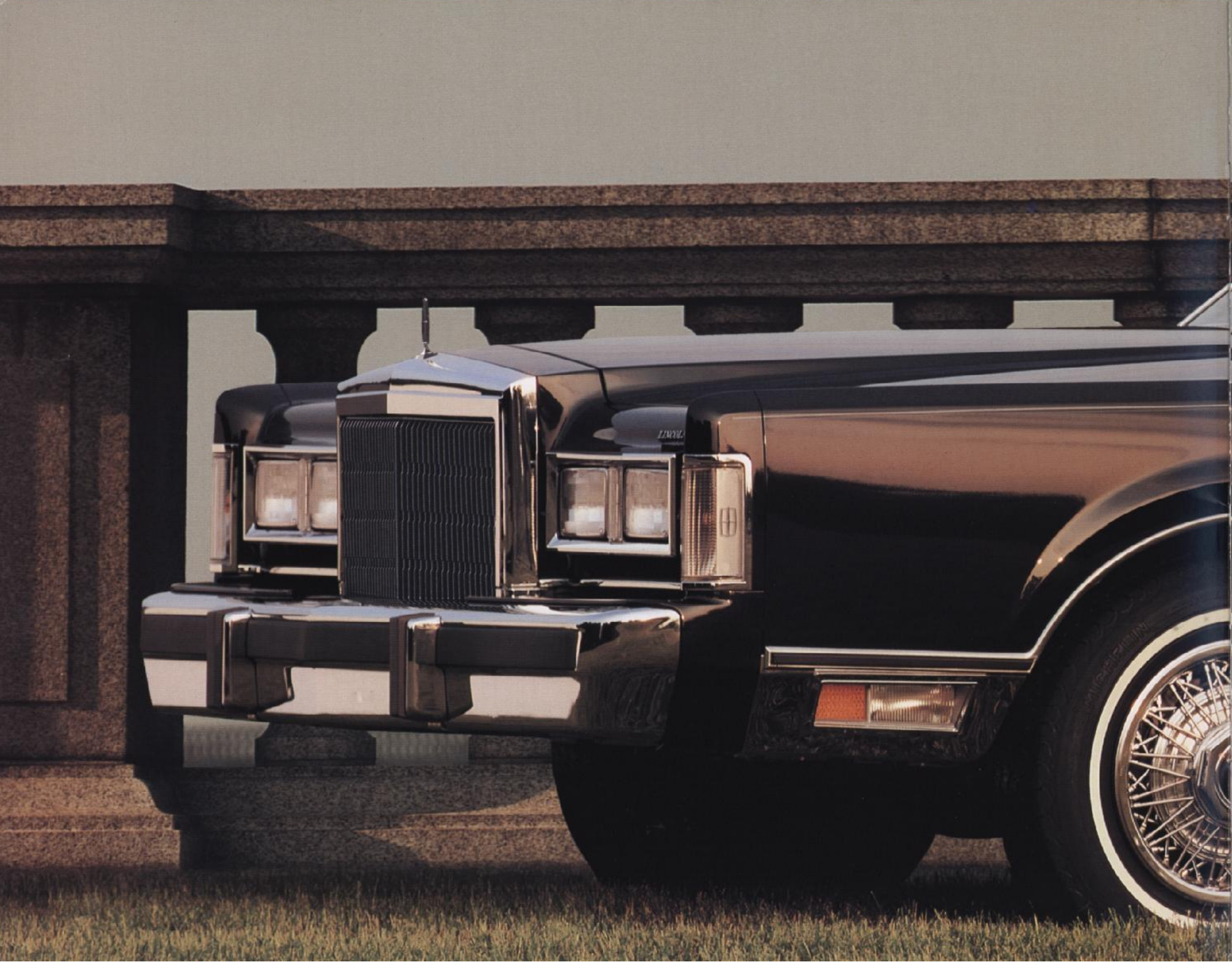


A black and white advertisement for the Lincoln Town Car. The background features a night-time photograph of the United States Capitol building, with its iconic dome illuminated. In the foreground, a Lincoln Town Car is shown from a front-three-quarter view, parked on a street. The car's headlights are on, and there are light trails from other vehicles in the background. A vertical grey bar on the right side of the image contains the text 'LINCOLN TOWN CAR PORTFOLIO' and '1988'.

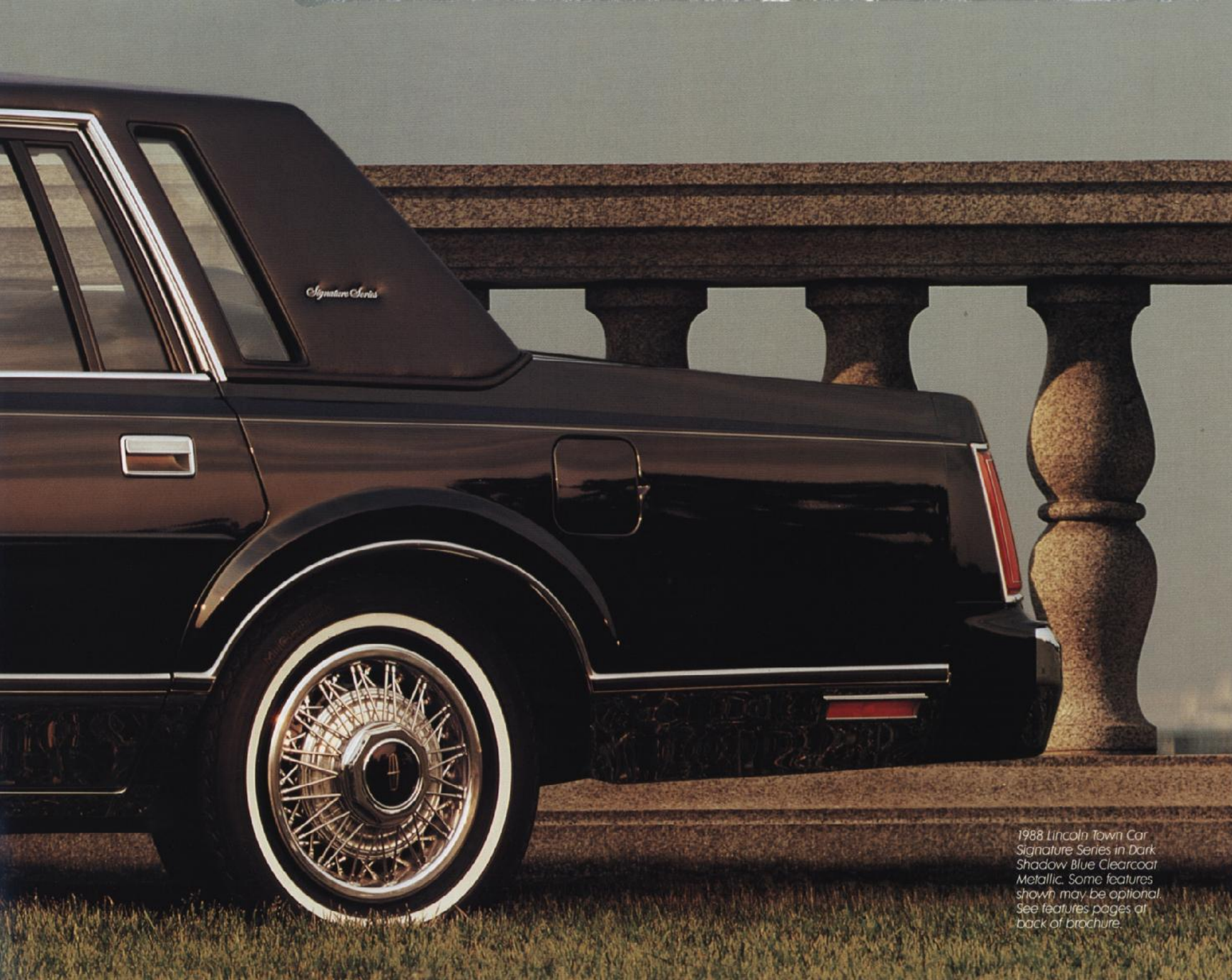
LINCOLN  
TOWN CAR  
**PORTFOLIO**

1988





*Town Car*



*Signature Series*

1988 Lincoln Town Car  
Signature Series in Dark  
Shadow Blue Clearcoat  
Metallic. Some features  
shown may be optional.  
See features pages at  
back of brochure.